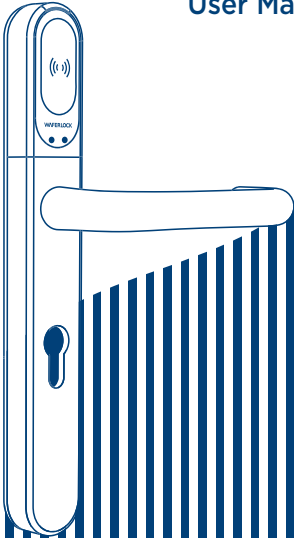


**WAFERLOCK**  
Security ∞ Simplicity

# L700 ELECTRONIC HANDLE LOCK

User Manual



[www.waferlock.com](http://www.waferlock.com)

## ■ Your Warranty

Your Warranty covers all manufacturers' defects in workmanship and material. It does not cover any unit that is damaged beyond normal usage, by improper installations, by contacts to chemicals, or any other acts or omissions unactioned within the user manual. All components are covered for one (1) year after the date of purchase or installation from supplier. The user is required to provide dated proof of purchase. Waferlock or its authorized distributor will determine if there is a warrantable condition associated with material and/or manufacturing workmanship. If the lock conforms to the warranty conditions, the lock will be repaired free of charge. The shipping freights would be at owner's expense. The warranty does not include any further obligation whatsoever, including but not limited to the installation of the replacement unit to the customer's lock. All other warranties, express or implied, are disclaimed. All collateral agreements, which purport to modify this limited warranty, are of no effect.

## ■ CE Marking

This device has been tested to and conforms to the regulatory requirements of the European Union and has attained CE Marking. The CE Mark is a conformity marking consisting of the letters "CE". The CE Mark applies to products regulated by certain European health, safety and environmental protection legislation. The CE Mark is obligatory for products it applies to: the manufacturer affixes the marking in order to be allowed to sell his product in the European market. This product conforms to the essential requirements of the R&TTE directive 1999/5/EC in order to attain CE Marking. The CE Marking is not a quality mark. Foremost, it refers to the safety rather than to the quality of a product. Secondly, CE Marking is mandatory for the product it applies to, whereas most quality markings are voluntary.

## WAFERLOCK CORPORATION

Tel: 886-4-24620208 Fax: 886-4-24636286

No. 16 Ke Yuan 2nd Rd., Central Taiwan Science Park  
Taichung city 407, Taiwan.

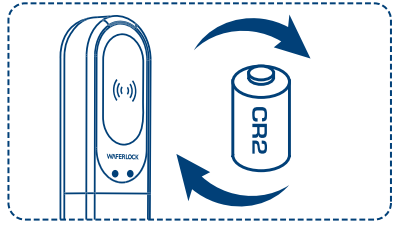
E-mail: [info@waferlock.com](mailto:info@waferlock.com)



## Low Battery Warning

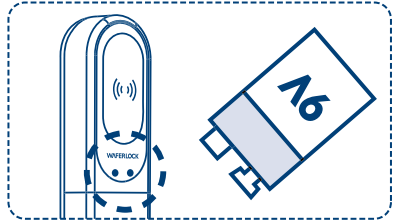
### ⊙ Low Power Warning

If the lock battery is low, there is an acoustic warning for the user with 3 short beeps 5 times, followed by red light flashing. Please replace a new battery to keep lock operating well.



### ⊙ Emergency External Power Supply

Backup 9V battery contact point is at the front panel. Connect 9V battery with contact points.



## Set Up The Programming Card

### ⊙ Default

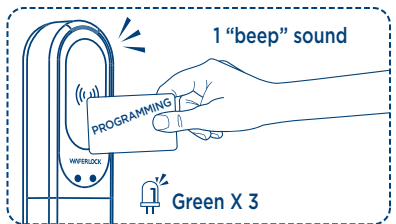
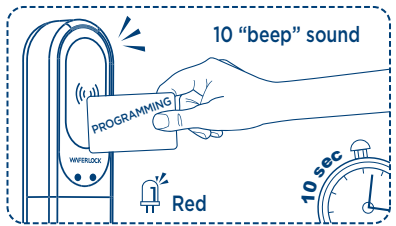
Before setting the programming card, it is allowed to use any cards/tags to unlock.

**The Programming Card must be linked to the lock before any other steps can take place.**

### Note

If 2 short beeps occur with the red light flashing 2 times, the setup was not successful. Please re-program.

- 1 Tap the programming card on the reader, the red light will start flashing for 10 seconds until "1 long beep sound" followed by the green light flashing 3 times.

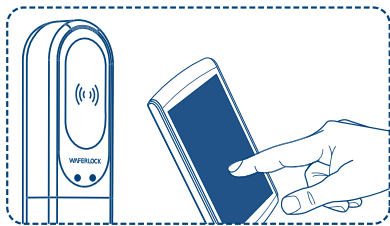


### Note

1. Within these 10 seconds, do not remove the programming card away from the reader.
2. Programming card is used to add/delete user cards/badges, but not be used to unlock the locks.
3. Any MIFARE card will be able to unlock the lock before it is programmed.
4. There is only ONE programming card per lock. Please keep it safely.
5. You can use one programming card for multiple locks.

## Lock Setup with App

Follow below steps to get your lock setup with **WAFERKEY** App. You can also use the mobile App to set up your lock step-by-step and access installation videos.



- 1 Download the App by searching "**WAFERKEY**" in the App Store (iOS) or on Google Play (Android).



- 2 Open the App, simply use a Third Party Login or register a **WAFERKEY** account.
- 3 Make sure the lock has been already programmed by the programming card. Turn on Bluetooth on your smartphone, stay near the lock and follow the instruction in the App.
- 4 Pair the lock in the App and start to use it.

### Note

1. The **WAFERKEY** App works on iPhone with iOS 13.6 or later, or devices with Android 8.0 or later.
2. Be sure to accept any available firmware update.
3. Please refer to the instruction in **WAFERKEY** App for more information.
4. Once the lock turns to App Mode, **ALL** the existing user access settings (Key Card, Passcode ...) will be deleted.

## DON'T WANT TO USE THE APP?

Please go to Standalone Mode page for manual programming instructions.

Questions about your new lock?  
Let us help you!  
[support@waferlock.com](mailto:support@waferlock.com)

## Standalone Mode Programming

### WARNING

Standalone Mode programming functions (Programming Card) are **NOT** available after the lock is paired with mobile App!  
If you would like to use Standalone Mode, please unpair the lock via **WAFERKEY** App.

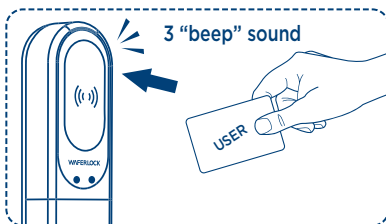
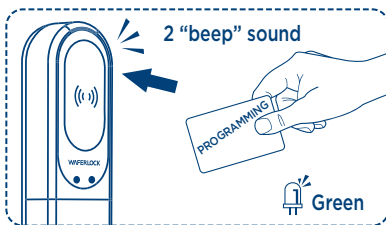
### Note

1. Please remember to set up the programming card, referring to former instruction.
2. If 2 short beeps occur with the red light flashing 2 times, the setup was not successful. Please re-do the step again.

## Standalone Mode Programming

### Program New User Card

- 1 Tap the programming card on the reader. There will be 2 beeps, and the green light starts flashing. Tap the user card on the reader, there will be 3 beeps and the green light flashes 1 time. Then the new user card is programmed. As long as the green light flashing persists, you may add more user cards. The overall programming session will end until 2 beeps and red light flashes 2 times.

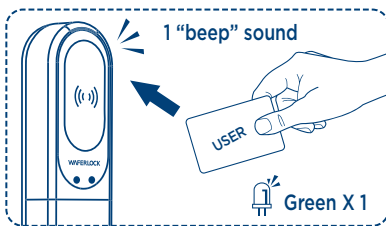


### Note

1. After tapping the programming card on the reader, if you do not swipe the user card/badge on the reader within 10 seconds, the programming mode will be cancelled.
2. The maximum of 2000 user cards/badges can be programmed. By reaching the maximum limit, you can hear 10 short beeps followed by red and green lights alternately flashing 3 times.

### Unlock The Door With User Card

Approach the reader with programmed user card/badge, you will hear 1 beep, followed by green light flashing 1 time, then the door is unlocked.



### Note

If you hear 2 beeps followed by the red light flashing 2 time, it means the card/badge is invalid.

### Delete All User Cards

- 1 Tap the programming card on the reader, then there will be 2 beeps and green light starts flashing.
- 2 Re-do the same procedure for second time, there will be 2 beeps and green light keep flashing.
- 3 For the third time, follow the former same steps, and keep tapping card for around 5 seconds until a long beep occurs. The red light will flash 5 times, and all user cards have been deleted.

